



# OpenStreetMap workshop

Casper Kersten & Just  
van den Broecke

Middelburg  
2023-09-13

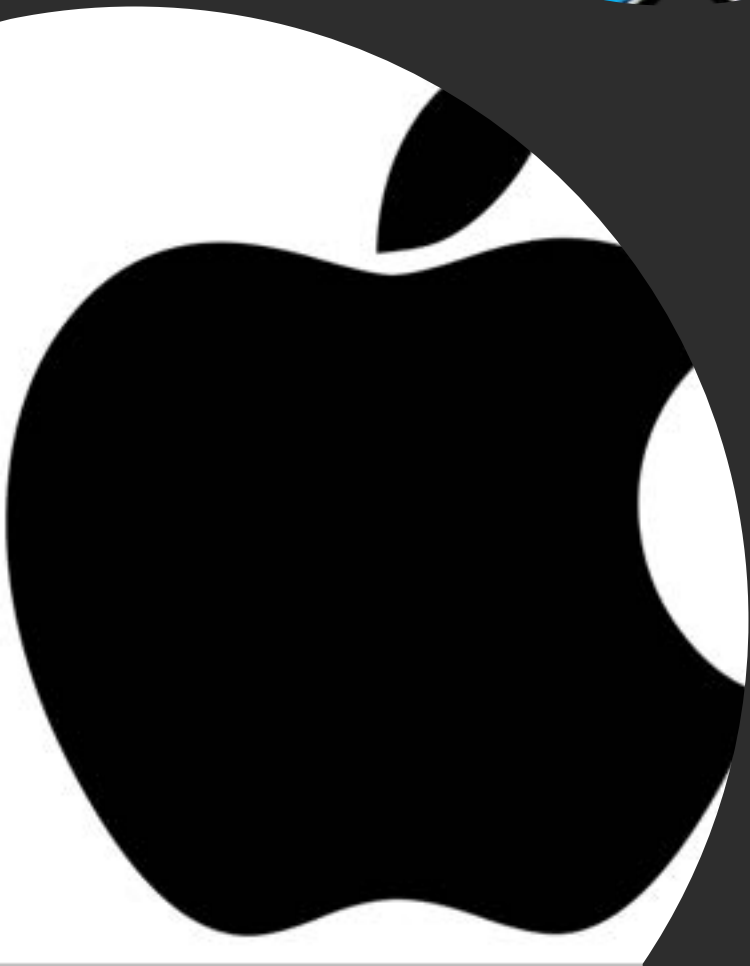
<https://osmws.osgeo.nl/>



Ondersteunende website  
voor deze workshop

[osmws.osgeo.nl](https://osmws.osgeo.nl)

content: <https://github.com/osgeonl/osmws.osgeo.nl>



Iedereen gebruikt  
OpenStreetMap



# Overzicht

Principes van  
OSM



Het OSM  
datamodel



Gereedschapp  
en



De organisatie  
achter OSM



Zelf aan de  
slag!

# De richtlijnen van OpenStreetMap




*Wat doen we en waarom doen we het zo?*

- Verifieerbaarheid: breng in kaart wat je kunt zien
- Kies de tags die het beste passen
- Je bent mede-eigenaar van de kaart
- Kopieer niet zomaar van andere kaarten
- Heb plezier!






# Het datamodel van OpenStreetMap

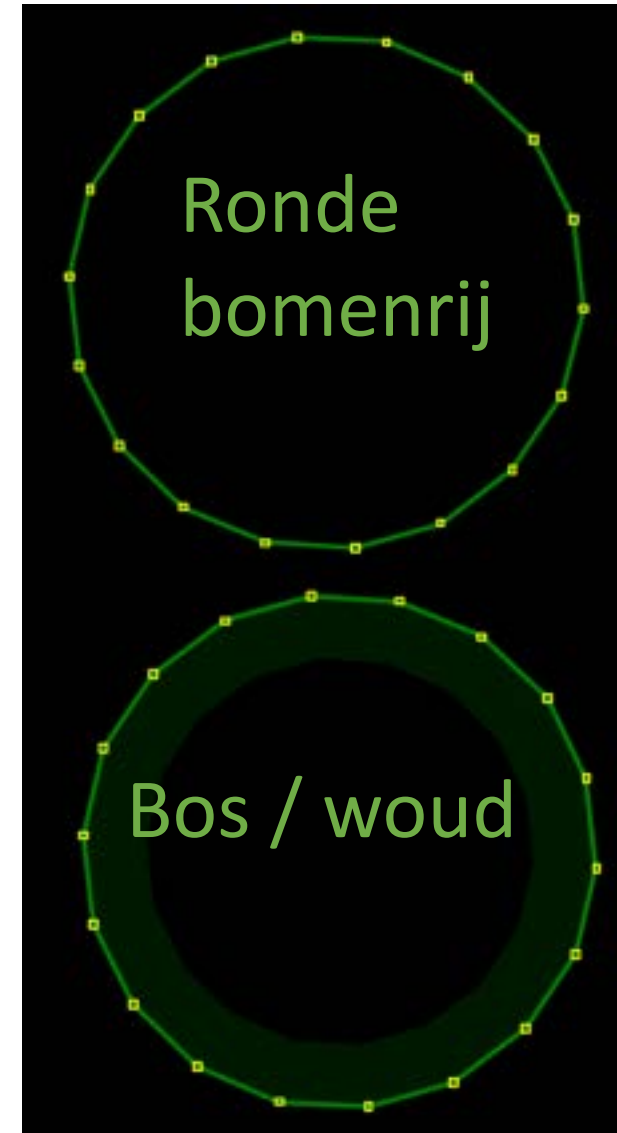
## Andere GIS

-  • Punten
-  • Lijnen
-  • Polygonen

## OSM

-  • Nodes
-  • Ways
-  • Relations

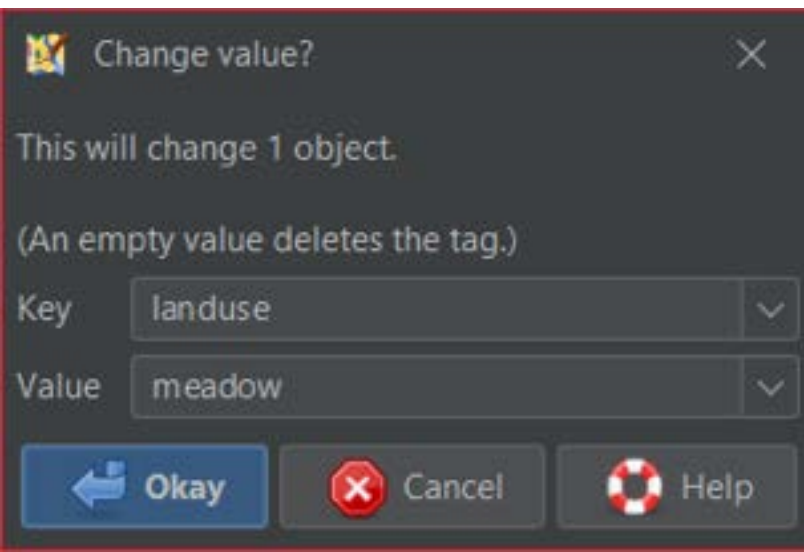
Over de [evolutie van het OSM datamodel](#) wordt nagedacht.



# Tagging

Tags in OSM zijn zogenaamde key-value pairs.

De meeste tags zeggen iets inhoudelijks over een object. Sommige tags dienen alleen als metadata voor de mappers.



Other landuse key values [ <a href="#">edit</a> <a href="#">source</a> ]					
landuse	<a href="#">brownfield</a>		Braakliggend terrein		
landuse	<a href="#">cemetery</a>		Begraafplaats. Zie ook <a href="#">amenity=grave_yard</a> voor kerkhoven.		
landuse	<a href="#">conservation</a>		Protected areas (deprecated) Alternate tagging of same thing: <a href="#">boundary=protected_area</a> , <a href="#">protected_area=*</a>		
landuse	<a href="#">depot</a>		An area used as a depot for e.g. vehicles (trains, buses or trams). Consider using rather standard landuse tags like <a href="#">landuse=railway</a> , <a href="#">landuse=commercial</a> , <a href="#">landuse=industrial</a> , with subtag like <a href="#">industrial=depot</a> .	currently not rendered by OSM Carto	
landuse	<a href="#">garages</a>		Garageboxen Aantal garages op een rij, meestal achter of tennidden van huizen en eventueel toegankelijk via een <a href="#">highway=service</a>		
landuse	<a href="#">grass</a>		Grasveld Met landbouwfunctie (grazen en maaien) eerder <a href="#">landuse=meadow</a> .		

- 1.15 Healthcare
- 1.16 Entertainment, Arts & Culture
- 1.17 Others
- 1.4 Barrier
  - 1.4.1 Linear barriers
  - 1.4.2 Access control on highways
- 1.5 Boundary
  - 1.5.1 Boundary types
  - 1.5.2 Attributes
- 1.6 Building
  - 1.6.1 Accommodation
  - 1.6.2 Commercial
  - 1.6.3 Religious
  - 1.6.4 Club/Amenity
  - 1.6.5 Agricultural/Plant production
  - 1.6.6 Sports
  - 1.6.7 Storage
  - 1.6.8 Cars
  - 1.6.9 Power/Technical buildings
  - 1.6.10 Other Buildings
  - 1.6.11 Additional Attributes
- 1.7 Craft
- 1.8 Emergency
  - 1.8.1 Medical Rescue
  - 1.8.2 Firefighters
  - 1.8.3 Lifeguards
  - 1.8.4 Assembly point
  - 1.8.5 Other Structure
- 1.9 Geological
- 1.10 Healthcare
- 1.11 Highway
  - 1.11.1 Roads
  - 1.11.2 Link roads
  - 1.11.3 Special road types
  - 1.11.4 Paths
  - 1.11.5 Lifecycle
  - 1.11.6 Attributes
  - 1.11.7 Other Highway features
- 1.12 Hobbies
- 1.13 Landuse
  - 1.13.1 Common Landuse Key Values - Developed land
  - 1.13.2 Common Landuse Key Values - Rural and agricultural land
  - 1.13.3 Other Landuse Key Values
- 1.14 Leisure
- 1.15 Man\_made
- 1.16 Military
- 1.17 Natural
  - 1.17.1 Vegetation or surface related
  - 1.17.2 Water related
  - 1.17.3 Landform related
- 1.18 Office
- 1.19 Place
  - 1.19.1 Administratively declared places
  - 1.19.2 Populated settlements, urban
  - 1.19.3 Populated settlements, urban and rural
  - 1.19.4 Other places
  - 1.19.5 Additional attributes
- 1.20 Power
- 1.21 Public Transport
- 1.22 Railway
  - 1.22.1 Tracks
  - 1.22.2 Additional features
  - 1.22.3 Stations and Stops
  - 1.22.4 Other railways
- 1.23 Route
- 1.24 Shop
  - 1.24.1 Food/beverages
  - 1.24.2 General store, department store, mall
  - 1.24.3 Clothing, shoes, accessories
  - 1.24.4 Discount store, charity
  - 1.24.5 Health and beauty

# Navigeren op openstreetmap.org

Search

Waarheen? Go

Zoeken met Nominatim

Bewerk de kaart

Plan een route

Gebruikersaccount

Selecteer een basemap

Laat een notitie achter

Wat is hier? (query tool)

Onze licentie

500 m  
1000 ft



# iD – snel en makkelijk de kaart verrijken



The screenshot displays the OpenStreetMap iD editor interface. The main map shows an aerial view of a city area with various buildings and streets. A red pin is placed on a green field labeled 'Middelburg'. The 'Edit feature' panel on the left is open, showing the following details:

- Name:** Middelburg-Centrum
- Sources:** CBS
- Wikidata:** Middelburg-Centrum
- Description:** Staddeel von Middelbur...
- Identifier:** Q114619386
- Tags (4):** name: Middelburg-Centr...

The top navigation bar includes 'OpenStreetMap', 'Edit', 'History', and 'Export'. The right side of the interface has links for 'GPS Traces', 'User Diaries', 'Communities', 'Copyright', 'Help', and 'About', along with a user profile for 'Friendly\_Ghost'. The map interface includes 'Inspect', 'Add Feature' (with options for Point, Line, Area), 'Undo / Redo', and 'Save' buttons. The bottom of the map shows a scale bar for 30m and a list of editors: 'Edits by Mitje, Jakkeedhaar, wrdp, and 29 others'.

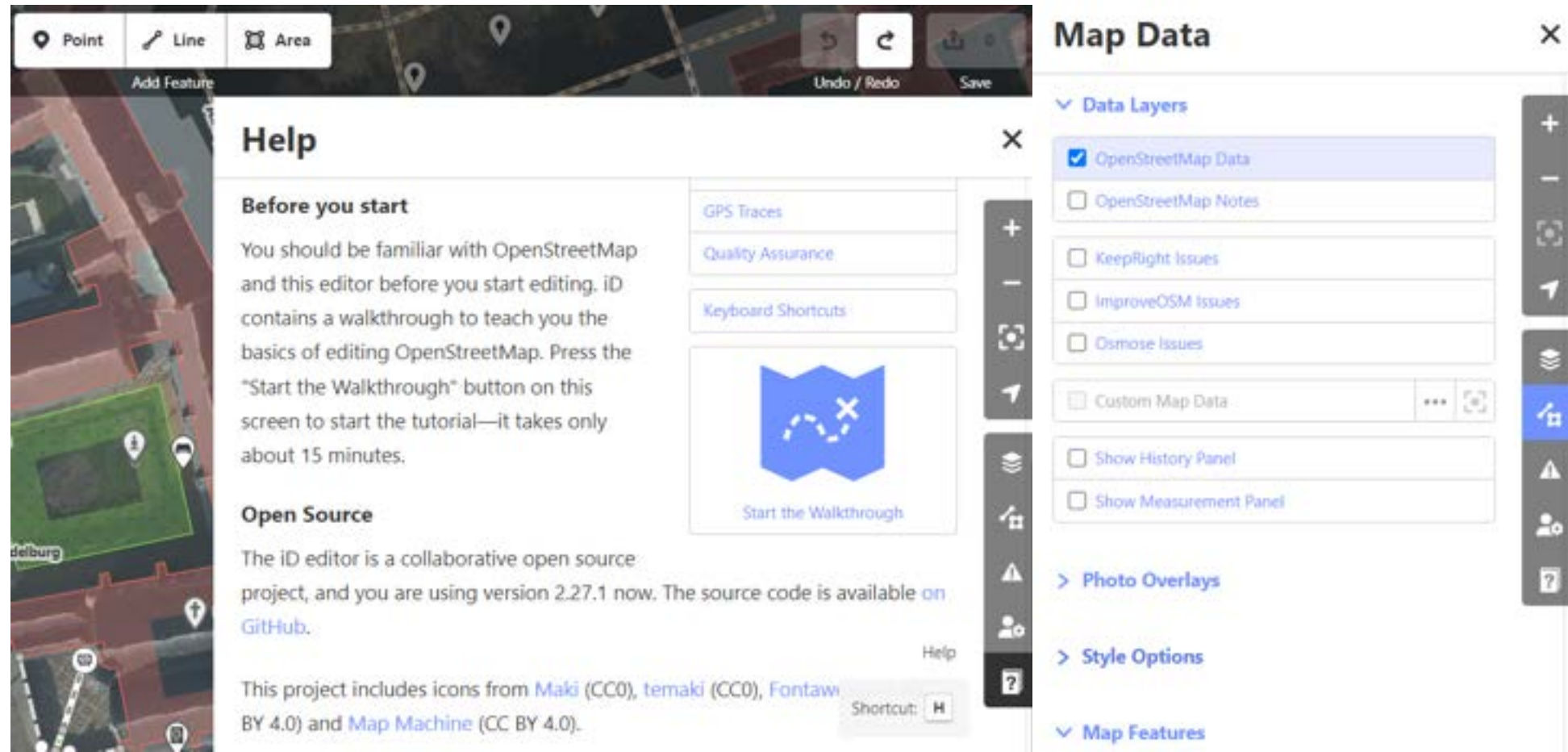
# Aan de slag met iD

Lijst met shortcuts: <https://wiki.openstreetmap.org/wiki/ID/Shortcuts>

Volg de walkthrough

Vind op de kaart een plek die je goed kent, en voeg daar iets toe wat nog ontbreekt.

Elke bewerking is belangrijk voor OSM



The screenshot displays the iD editor interface. At the top, there are buttons for 'Point', 'Line', and 'Area' under the 'Add Feature' section, along with 'Undo / Redo' and 'Save' buttons. The main content area is a 'Help' panel with the following text:

**Help**

**Before you start**

You should be familiar with OpenStreetMap and this editor before you start editing. iD contains a walkthrough to teach you the basics of editing OpenStreetMap. Press the "Start the Walkthrough" button on this screen to start the tutorial—it takes only about 15 minutes.

**Open Source**

The iD editor is a collaborative open source project, and you are using version 2.27.1 now. The source code is available on [GitHub](#).

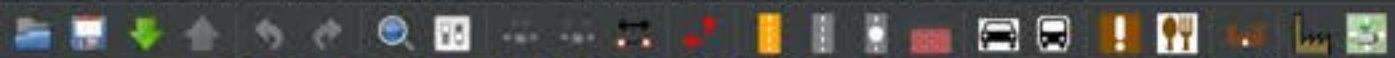
This project includes icons from [Maki](#) (CC0), [temaki](#) (CC0), [Fontaw](#) (CC BY 4.0) and [Map Machine](#) (CC BY 4.0).

Buttons for 'GPS Traces', 'Quality Assurance', and 'Keyboard Shortcuts' are visible. A large blue button with a map icon and a plus sign is labeled 'Start the Walkthrough'. A 'Shortcut: H' tooltip is shown at the bottom right.

On the right side, the 'Map Data' sidebar is open, showing 'Data Layers' with the following options:

- OpenStreetMap Data
- OpenStreetMap Notes
- KeepRight Issues
- ImproveOSM Issues
- Osmose Issues
- Custom Map Data
- Show History Panel
- Show Measurement Panel

Below 'Data Layers' are sections for 'Photo Overlays', 'Style Options', and 'Map Features'.



**Filter active**  
1291 objects hidden  
Close the filter dialogue to see all objects.

**Layers**

- [9] Data Layer 1
- [8] BGT Omtrekgerichte visualisatie (OSM OK)
- [7] BGT Icoonvisualisatie (OSM OK)(wmts)
- [6] DKK Kadastralekaart v4 grens (OSM OK)(wmts)
- [5] BGT Standaard (OSM OK)(wmts)
- [4] AHN4 maaiveld hillshade (OSM + Private Lic...)
- [3] AHN4 ruw hillshade (OSM + Private Licence...)
- [2] NSD Satelliet LATEST mosaic (OSM OK)(wmts)
- [1] Luchtfoto Actueel Ortho HR (7.5 cm) Beeldm...

**Tags: 13 / Memberships: 1**

official\_name: Orion, building 103  
operator: Wageningen University  
ref:tag: 028910000024017  
source: BAG, https://www.wageningencamp...  
source:date: 2017-11-01  
start\_date: 2013  
wheelchair: yes

Member Of	Role	Positi...
building ("building		

building ("building

+ Add

Set: Rel:0 /

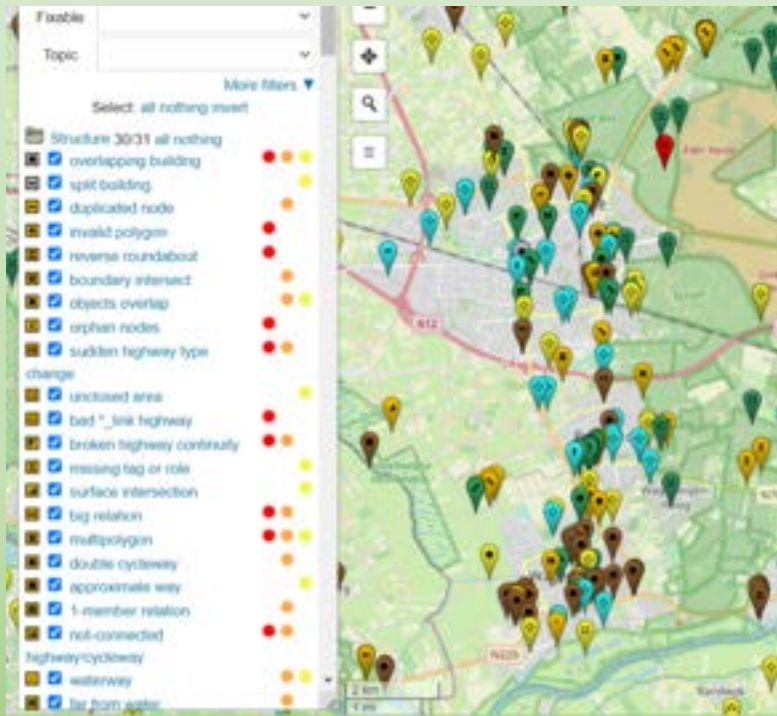
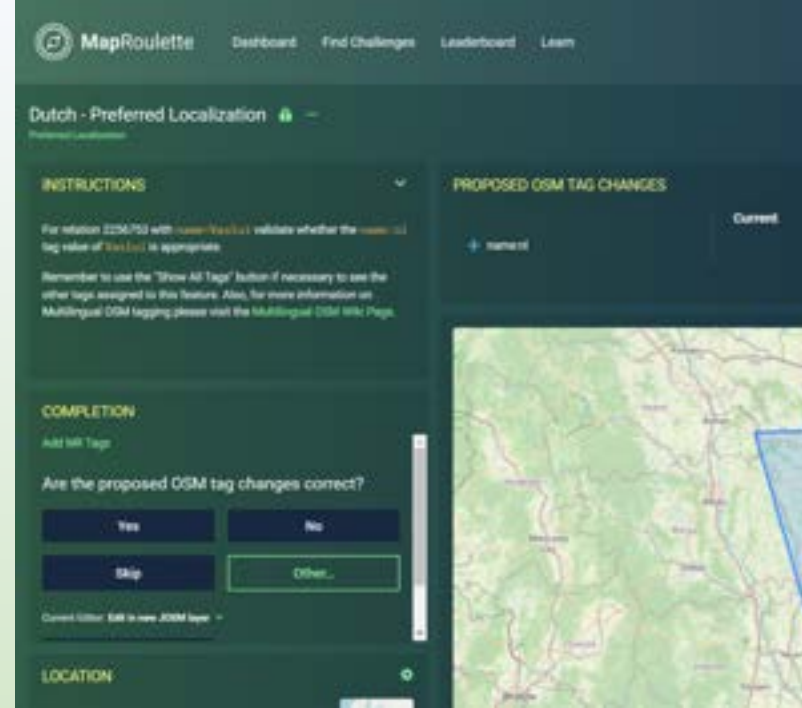
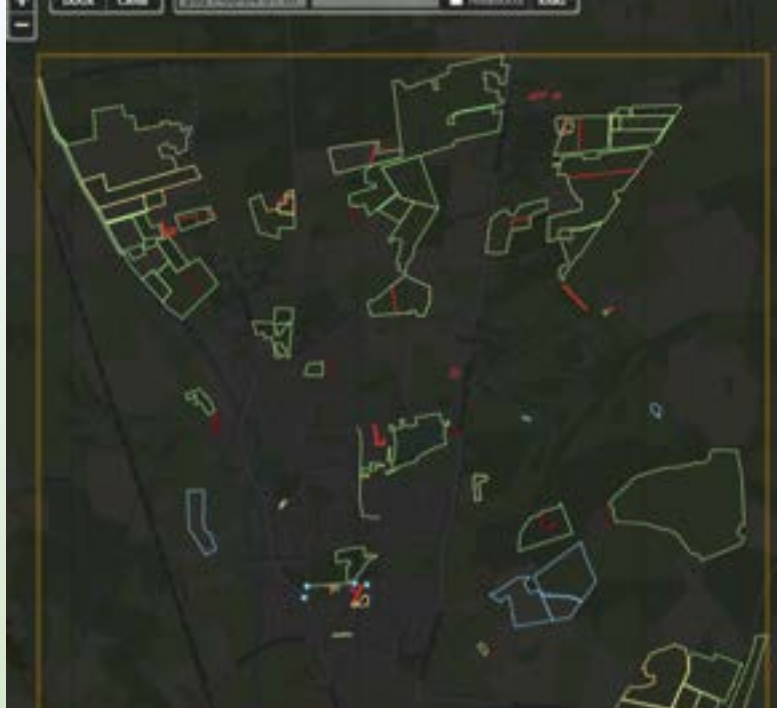
Relations: 55

- multipolygon (
- multipolygon (
- multipolygon (
- multipolygon (
- multipolygon (
- multipolygon (
- multipolygon (
- network ("Fiets

Filter Hidden: 1291 Disabled: 0

# Extra gereedschap

- Achavi
- MapRoulette
- Osmose
- OSM-revert



# Kwaliteitscontrole met Osmose

<https://osmose.openstreetmap.fr/>

# Statistieken

- How did you contribute?
- Taginfo & Taginfo NL
- OSMstats
- Streetcompleteness

**public**

Name: Friendly\_Ghost  
 Registered: 2020-03-09  
 Active contributor: Yes & Yes  
 Mapping days: 881 (1%)  
 Map changes: 1,177,229 (7,950)  
 Reverted changes: 1,292 (0.1%)  
 Discussed changesets: 135 (97)

Type? Super Mapper (Highly Active)

Recent changesets (details): Netherlands (206) Italy (159) United States (42)

Recent ranks: Netherlands #13 Vanuatu #14 Falkland Islands (Islas Malvinas) #17

OSM Notes: Closed w/ comment 11 (w/o 3), commented 23 and opened 19  
 Changeset discussions: Participated in 349 and created 526 comments  
 Rollbacks performed: Reverted 487 changesets w/ 9,805 changes of 322 contributors  
 User blocks: 2

ID editor: Resolved issues=2, Ignored warnings=8  
 Quality assurance: OSMI issues (details): routing=530, tagging=1993   
 Osmose issues: Level 1=447, Level 2=5293, Level 3=9301

270 mapping days with 3,271 changesets in the last year



**Buildings**

**61.23%**  
 of all buildings in Utrecht have data about what kind of building they are.

**4.22%**  
 of all buildings in Utrecht do have data about how many levels they have.

**0.53%**  
 of all buildings in Utrecht do have data about what shape their roof is.  
Overseas users that will find this statistic odd

**Ways and streets**

**40.85%**  
 of all ways in Utrecht do have data about what kind of surface they have.

**taginfo Database: Netherlands**

SLEUTELS · TAGS · RELATIES · PROJECTEN · RAPPORTEN · OVER

	Last modifier	Created
Nodes	332,648	218,083 (29%)
Ways	301,185	33,996 (8%)
Relations	3,851	784 (3%)

**OSMstats** About Trends Members Elements Countries Changesets Boards Date: 22 2 2023

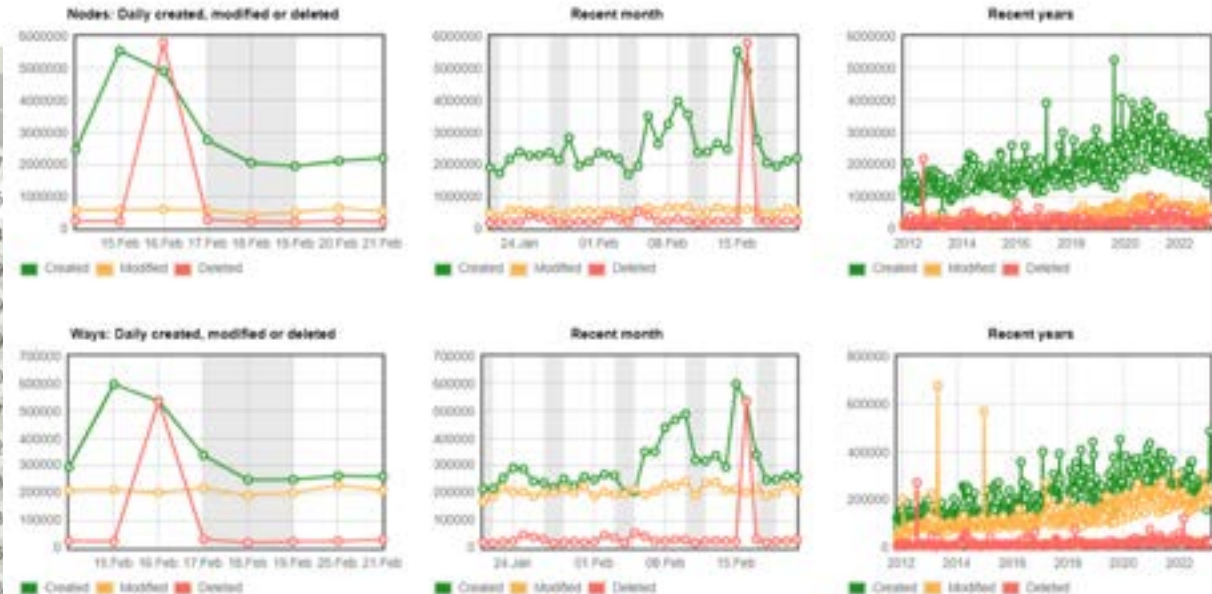
Latest Node: 10987039235 Way: 1148693244 Relation: 15521531 (Changeset: 132901350 @ 2023-02-22 21:55:59 UTC)

## SLEUTELS

Deze tabel geeft alle tag sleutels weer die in de database bestaan of in een van de andere bronnen.

Pagina 1 van 577 Geeft 1 tot 16 van 9224 items weer

Sleutel	Objecten	Nodes	Wegen
source	22 135 596 15.84%	9 626 267 87.48%	12 450 244 75.40%
source:date	20 322 716 14.54%	9 471 528 86.08%	10 843 603 65.67%
building	10 905 316 7.80%	725 0.01%	10 896 977 65.99%
start_date	10 827 774 7.75%	29 443 0.27%	10 787 962 65.33%
ref:tag	10 813 403 7.74%	4 441 0.04%	10 801 563 65.41%
addr:street	9 556 784 6.84%	9 497 520 86.31%	59 025 0.36%
addr:housenumber	9 554 493 6.84%	9 496 018 86.30%	58 255 0.35%
addr:city	9 549 470 6.83%	9 496 510 86.30%	52 743 0.32%
addr:postcode	9 339 975 6.68%	9 290 002 84.43%	49 771 0.30%
highway	2 582 576 1.85%	189 831 1.73%	2 391 542 14.48%
landuse	1 836 695 1.31%	124 0.00%	1 782 298 10.79%
name	1 590 913 1.14%	274 827 2.50%	1 286 130 7.79%
natural	945 304 0.68%	486 269 4.42%	444 759 2.60%



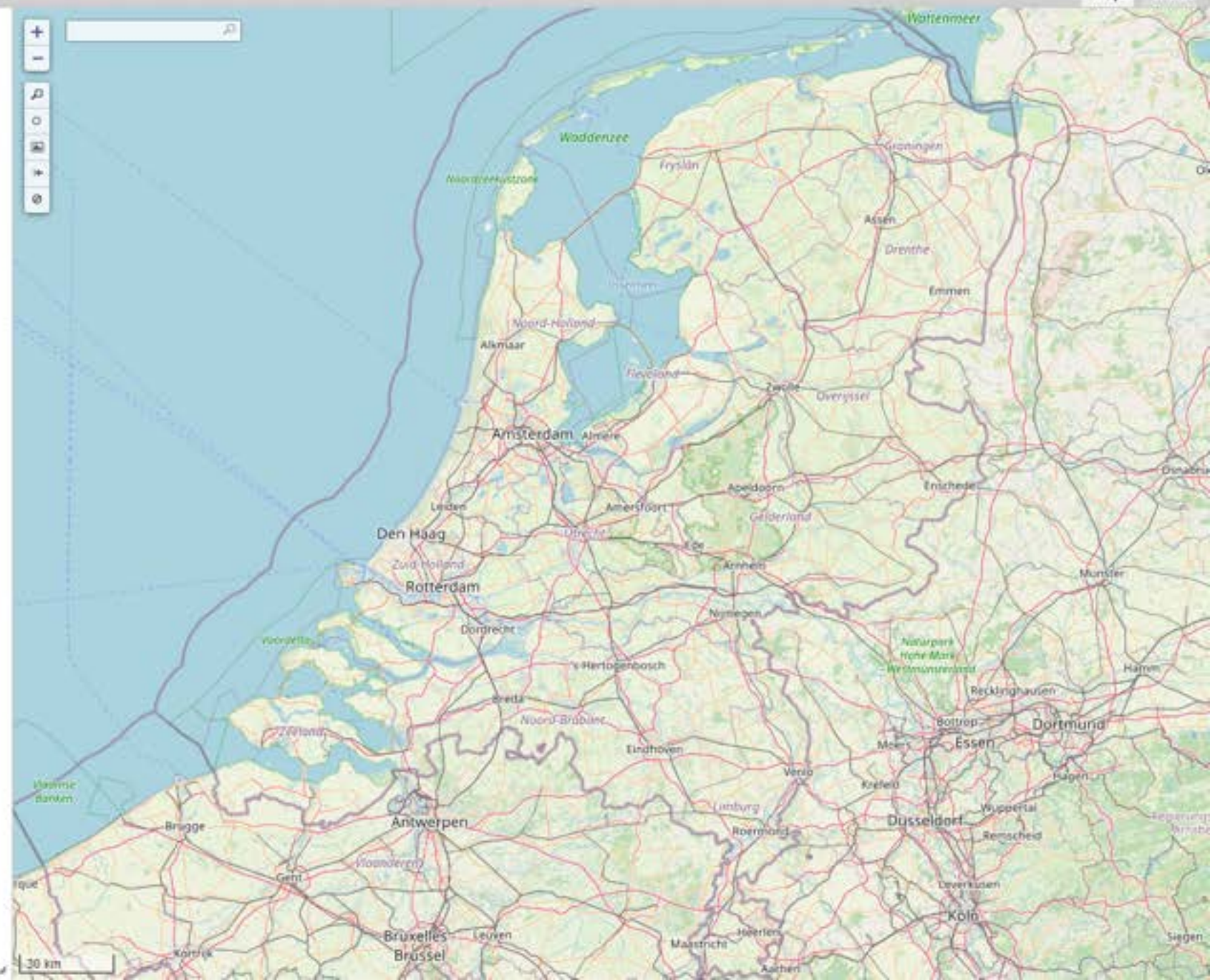
```

1 /*
2 This query looks for nodes, ways and relations
3 with the given key/value combination.
4 Choose your region and hit the Run button above!
5 */
6 [out:json][timeout:1125];
7 // gather results
8 (
9 // query part for: "building=unclassified"
10 way["building"="unclassified"]({{bbox}});
11 relation["building"="unclassified"]({{bbox}});
12 );
13 // print results
14 out meta;
15 >;
16 out skel qt;

```

# Overpass QL en Overpass Turbo

- Zoek gericht naar OSM data
- Download geojson, xml, csv en andere bestandstypen
- Hulpmiddel voor systematische kaartbewerkingen



Project Edit View Layer Settings Plugins Vector Remote Fetch Plugins Mesh Processing Units

Browser

- Home
- C:\ (Windows)
- GeoPackage
- Spatialite

Layers

Statistics

Statistic	Value
-----------	-------

Selected features only

Type to locate (Ctrl+K)

# QuickOSM plugin in QGIS

### QuickOSM

Help with key/value Reset

Preset: Not mandatory. Ex: bakery

	Key	Value	Add	Delete
1	Query on all keys	Query on all values		

In: A village, a town...

**Named area is required when the query is "In".**

Save query in a new preset Show query Run query

Query history

- OsmQuery  
No description Run Save
- OsmQuery  
No description Run Save

Advanced

- Node  Points
- Way  Lines
- Relation  Multilinestrings
- Metadata  Multipolygons

Timeout: 25

Directory: Save to temporary file

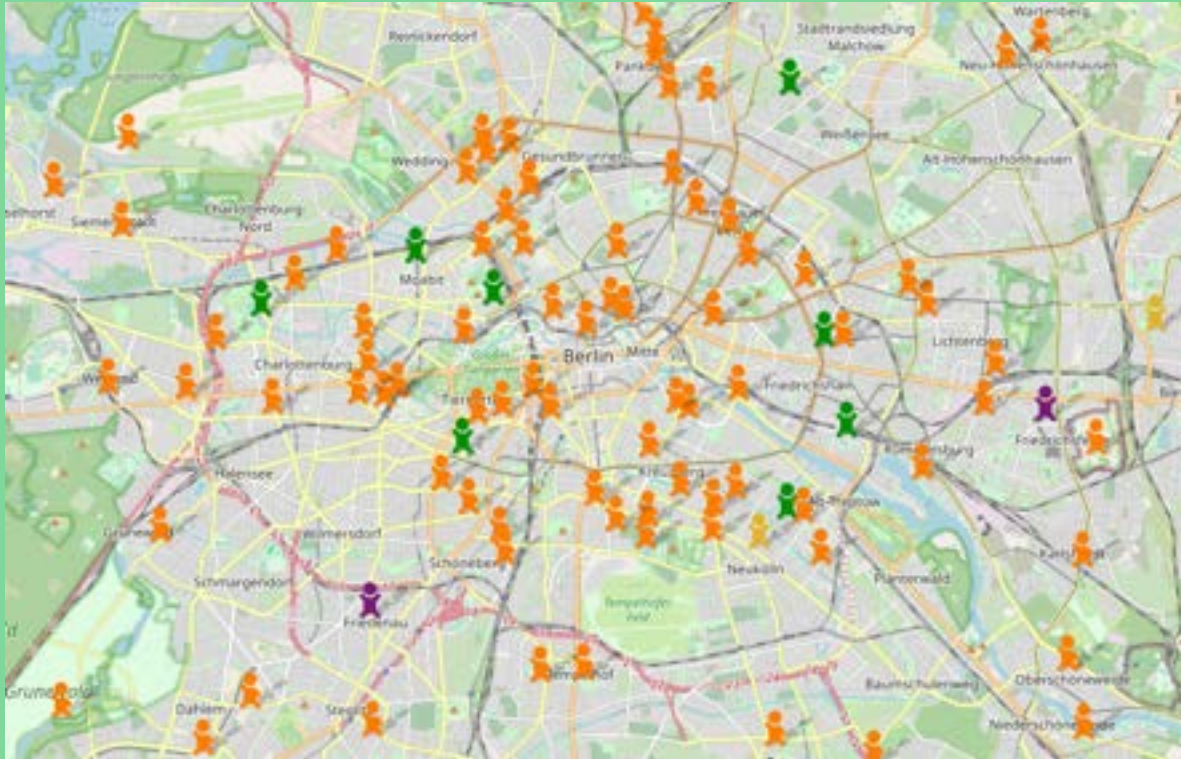
Format: GeoPackage

File prefix:

0%

Render EPSG:4326





De mappers om je heen

## Het OSM ecosysteem

- Decentrale gemeenschappen
- Besluiten op basis van consensus
- Geen “oplossing voor alles”



OpenStreetMap  
Foundation



Humanitarian  
OpenStreetMap  
Team



weekly  
**OSM**



# StreetComplete en Every Door



Einde

Bedankt voor de aandacht

Dank aan de organisatoren  
van de FOSS4G-NL



Fork me on GitHub



Search

